



Department of
Environmental
Conservation

New York State Watercraft Inspection Steward Program

Joint NEANS Panel and MAPAIS Meeting
December 10, 2019

Aquatic Invasive Species Management Plan



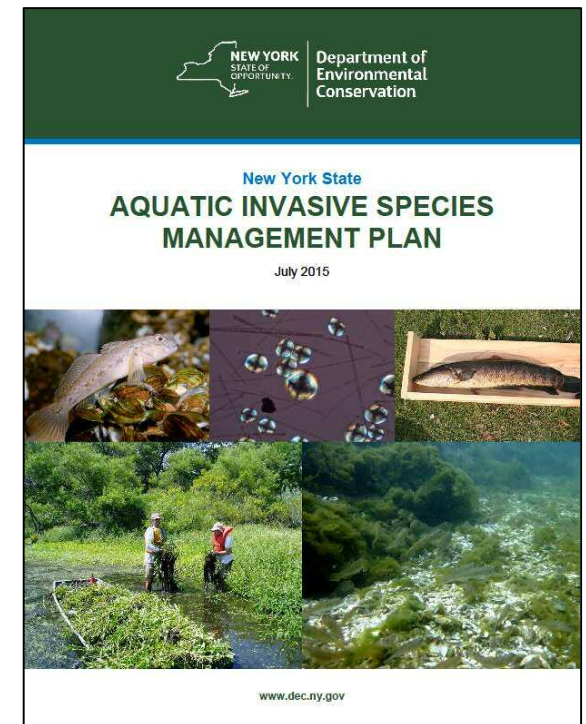
Stop the introduction and spread of aquatic invasive species into and within New York State's waters

NYS AIS Management Plan

Ten high priority actions which include:

1A1. Expand the boat launch steward program and ensure consistency of these programs statewide

1A2. Implement an AIS public awareness campaign and evaluate its effectiveness in reaching target audiences



Prevention: Regulatory Efforts

Amendment to Article 3 of the Navigation Law – “AIS spread prevention signs at public boat launches”

6 NYCRR Part 59.4 (DEC) & 9 NYCRR Part 377.1 (Parks) – “AIS spread prevention regulations for boat launching/retrieving at DEC and Parks-owned sites”

PROTECT YOUR WATERS!
Prevent the Spread of Invasive Species
Invasive Plants and Animals Can Impact Boating, Fishing, Swimming and the Environment

REMOVE any visible mud, plants, fish or animals before transporting equipment.



ELIMINATE water from equipment before transporting.

CLEAN & DRY anything that comes into contact with water (boats, trailers, waders, equipment, dogs, etc.).

NEVER release plants, fish or animals into a body of water unless they came out of that body of water.

 **STOP AQUATIC HITCHHIKERS!**
www.ProtectYourWaters.net

For further information scan this QR code with a smartphone, or visit:
www.dec.ny.gov/animals/48221.html

NEW YORK STATE DEPARTMENT OF ENVIRONMENTAL CONSERVATION
 625 BROADWAY, ALBANY, NY 12233-4753
www.dec.ny.gov

Prevention: Regulatory Efforts

6 NYCRR Part 575

“Regulated and Prohibited Plants and Animals”

6 NYCRR Part 576

“Reasonable Precautions to Prevent Spread of AIS”



Department of
Environmental
Conservation

Part 576

Clean, Drain, and Dry (Treat)

- Clean:** Inspect watercraft and equipment and dispose of materials
- Drain:** Drain water from watercraft and water holding compartments and cooling system
- Treat:**
 - Drying via heat/sun exposure or subfreezing temperatures
 - Rinsing
 - Anti-fouling paint

Funds dedicated to watercraft inspection steward programs

Adirondacks – more than \$8 million over 5 years

Hudson-Mohawk Rivers - \$950,192.25 for 3 years

Catskills- \$790,310.00 for 3 years

Additional programs wrapped into Partnerships for Regional Invasive Species Management (PRISMs):

- Western New York
- Finger Lakes
- St. Lawrence-Eastern Lake Ontario



Department of
Environmental
Conservation

Funds dedicated to outreach, control, etc.

2016 AIS Spread Prevention Grants: more than \$2.5 million

2017 Invasive Species Rapid Response and Control Grants: more than \$2 million

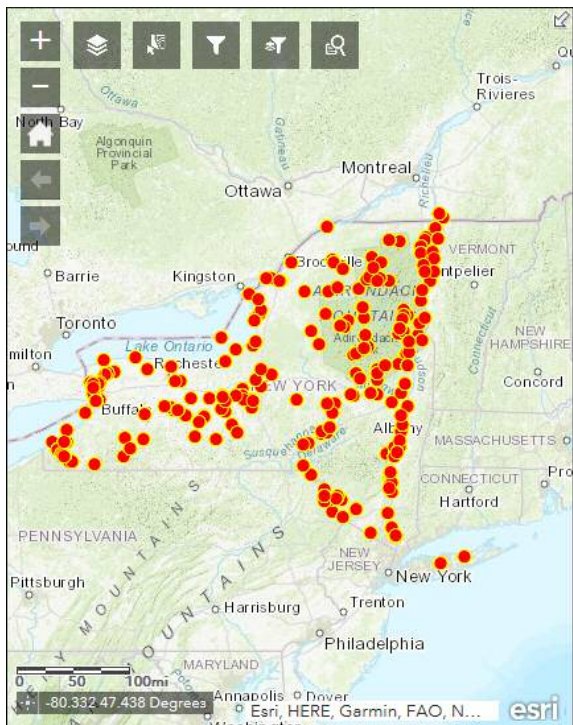
2019 Invasive Species Grants = \$2.8 million

- Lake management plans
- Control and management
- Research
- AIS spread prevention



Department of
Environmental
Conservation

2019



- First time full scale programs covering western NY, Catskills, Mohawk and Hudson Rivers
- Expansion of St. Lawrence/Eastern Lake Ontario, Finger Lakes, Adirondacks Programs

Watercraft Inspection Steward Program

- Provide consistent presence at popular launches
- Create a presence at tournaments and outreach events
- **Deploy decontamination stations at select locations**
- Develop and implement standardized steward training, education and outreach products, surveys and database

Decontamination stations (Adirondacks)

- Strategically placed at:
 - waterbodies containing microscopic AIS
 - high traffic waterbodies
 - gateways to multiple waterbodies (roadside)
 - 22 locations



Watercraft Inspection Steward Program

- Provide consistent presence at popular launches
- Create a presence at tournaments and outreach events
- Deploy decontamination stations at select locations
- **Develop and implement standardized steward training, education and outreach products, surveys and database**

Prevention: Data standardization and centralized database (WISPA)

Office of Parks, Recreation,
and Historic Preservation;
NYSDEC, and New York
Natural Heritage Program
(NYNHP) collaboration



Department of
Environmental
Conservation

The Survey

- Core of standardized questions
- Some customized questions as well
- Data can be saved in “outbox” until access to internet allows uploading to cloud



J. Clayton, NYSDEC

Some cost estimates

Average boat steward salary =
\$15,000 per season
(\$15/hour)

Samsung Galaxy Tab A
(tablets + screen protector +
case) = \$100 to \$150



J. Clayton, NYSDEC

More cost estimates

WISPA app = free download

ESRI GIS online license =
\$100

ESRI GIS software = *optional*



J. Clayton, NYSDEC

Behavioral Change

- Working with behavioral psychologist
- Tweaking our existing messaging
- Asking for a commitment at end of WISPA survey
- Stewards providing link to pre-behavioral change implementation survey



J. Clayton, NYSDEC

What Kind of Data Is Collected?

- When did the inspection occur?
- Where the boat launch and the steward were located?
- Was the watercraft launching or retrieving?
- What type of watercraft was inspected?
- Did the operator agree to an inspection?
 - If so, were any species/debris detected (if so, which species)?
- Was a Watercraft Decontamination performed?



How Does WISPA Work?

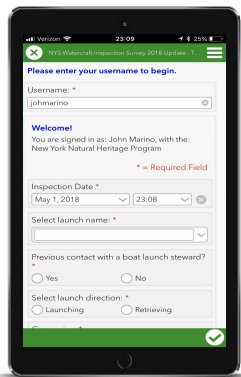
- Field data collection survey application (Survey123)
 - Requires internet connectivity for setup
 - Works offline once configured for data collection
 - Internet connectivity required for data upload
- Central GIS database (ArcGIS Online)
- Data Dashboard (ArcGIS Online)
- Data Editor Maps (ArcGIS Online)

How WISPA Works

WISPA Data Collection

Survey123

- Tool which boat launch stewards use to collect and upload data

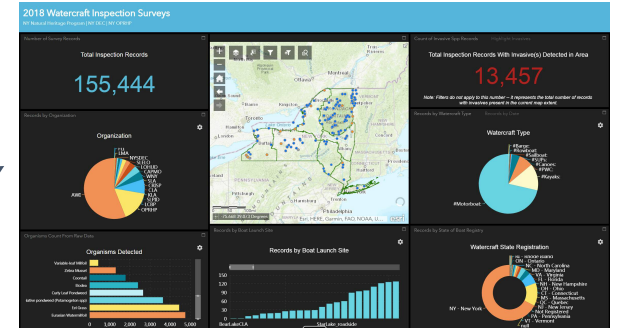


iPad Photo Credit: Wikimedia Commons user Netspy

ArcGIS
Online
NYSDEC

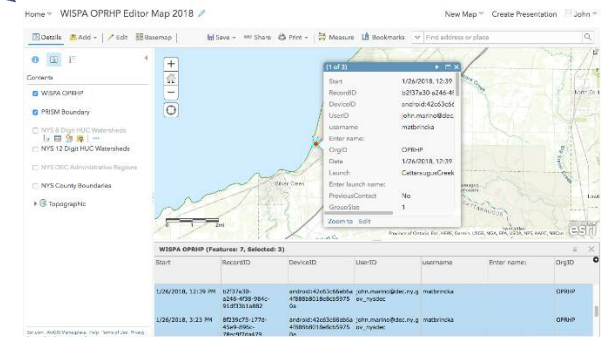
Dashboard

- Viewable by program coordinators
- Allows for view-only of all state data



Editor Map

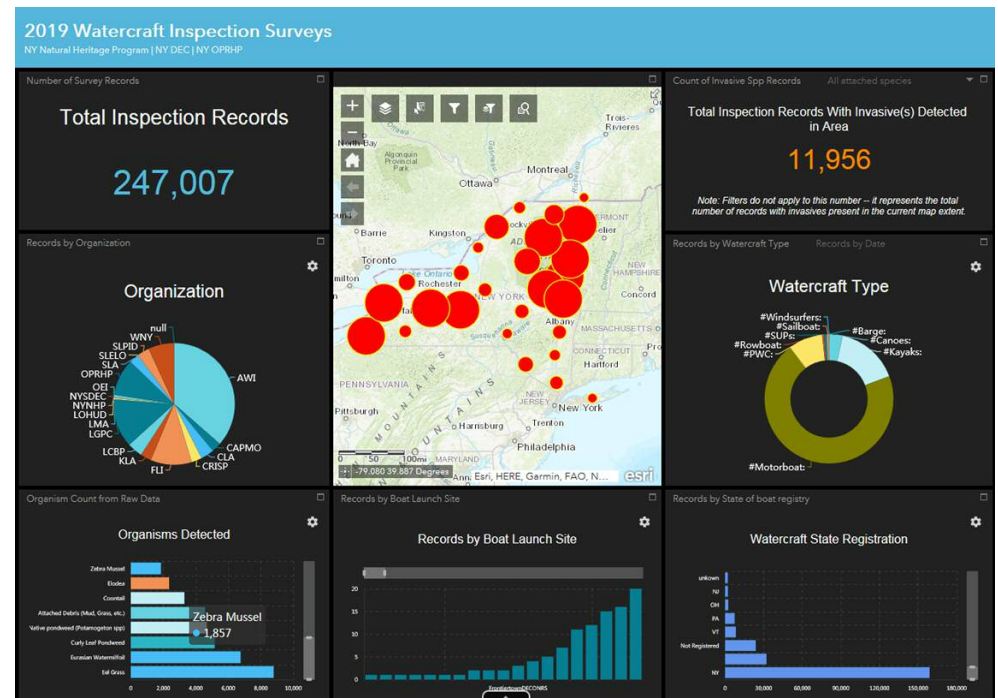
- Configured for each organization
- Allows for data editing of own organization's data



Data Viewing

Dashboard

- At-a-glance view of statewide data
- Filter by date or organization
- Data in charts and graphs match the data visible in the map

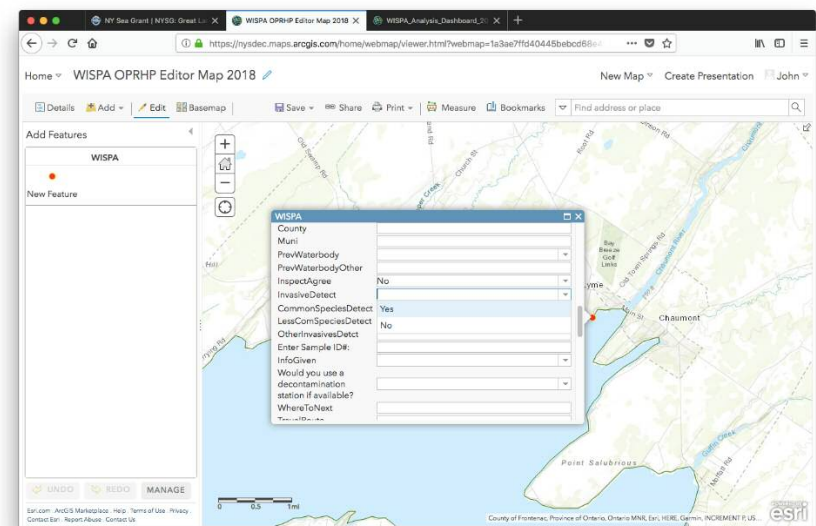


Department of
Environmental
Conservation

Data Editing

Editor Map

- View and edit all data submitted by stewards by organization
- Export data to different formats for detailed/custom analysis



WISPA Data Results 2019

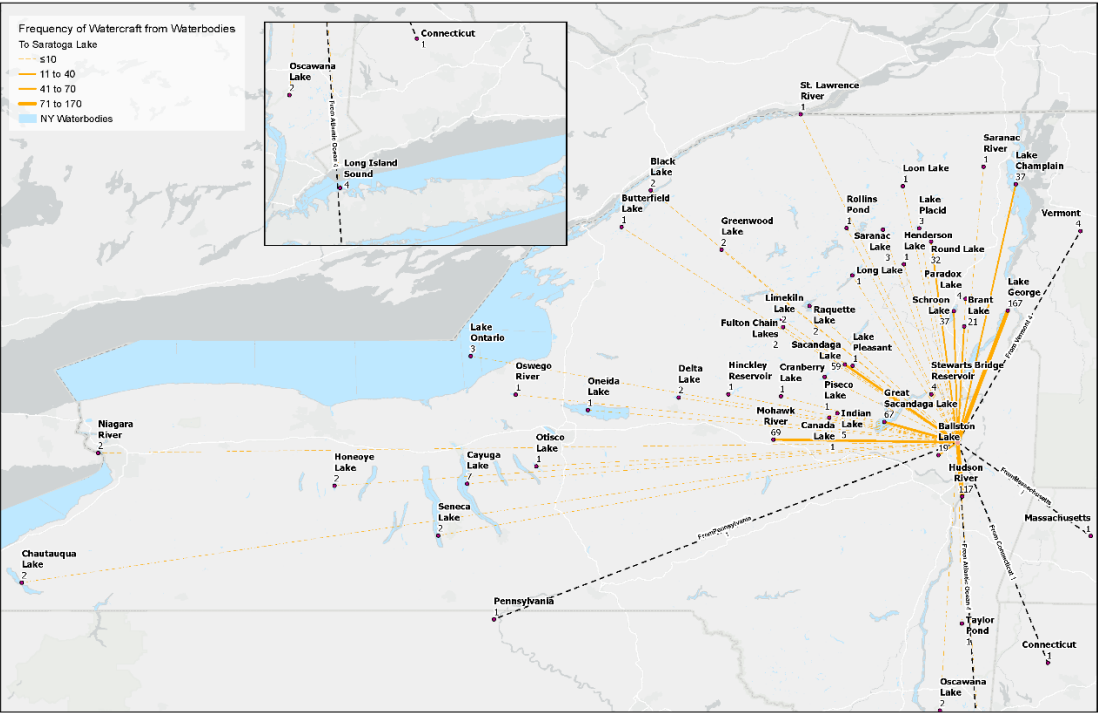
As of October 8, 2019

- 245,375 records collected
- 11,934 records with organisms detected (4.86% of total)
- Watercraft:
 - 71.5% motorboat
 - 14.5% kayaks
 - 7.7% personal watercraft
 - 6.3% all others
- Top species detected
 1. Eel Grass/Water Celery (*Vallisneria americana*)
 2. Eurasian Watermilfoil (*Myriophyllum spicatum*)
 3. Curly Leaf Pondweed (*Potamogeton crispus*)
 4. Native pondweed (*Potamogeton* spp.)
 5. Native coontail (*Ceratophyllum demersum*)



Department of
Environmental
Conservation

WISPA Data Analysis: “Spider” Maps



Map of the waterbodies
survey takers reported as
last visiting.

Helps us visualize potential movement of AIS

Provides understanding about which waterbodies are most at risk

WISPA Data Analysis

“Hits” Analysis

- Opportunity to join iMapInvasives data to WISPA data
- Highlights areas in which aquatic invasive species are potentially under-reported in iMapInvasives



Department of
Environmental
Conservation

2020 and beyond

- Part 576 Extender addressed
- Expect 300,000 records this coming season
- Archive for each season's records
- Full-time staff person dedicated to this project and iMapInvasives
- Pre-behavioral change survey of DMV registered boaters
- Continue providing results of Hits Analysis to PRISMs (Partnerships for Regional Invasive Species Management)

Thank you!

Cathy McGlynn
AIS Coordinator
Bureau of Invasive Species and Ecosystem Health
Invasive Species Coordination Section
catherine.mcglynn@dec.ny.gov



**Department of
Environmental
Conservation**